

What people are saying...

Boyne Mountain Resort

Best Resort and Best Teambuilding Venue
Michigan Meetings + Events Annual Readers' Poll

"You've heard it said by so many, 'I want to be 100 percent satisfied.' Well, those of us who attended the BCBSM Corporate Summer Meetings at Mountain Grand Lodge and Spa are able to say, without a doubt, we were wow'd. In the areas of registration procedure, room cleanliness, staff helpfulness, resort conditions and overall food quality, we came away with a 100 percent satisfaction level. That is a hard number to meet in anyone's book, but after three power-packed days at Mountain Grand Lodge and Spa, we can testify that our stay overall was a wonderful experience. Over 350 persons attended the event and are still talking about how enjoyable the weekend was and are looking forward to coming back in the near future."



Marla D. Larkin, CM
Manager, Board Relations
Blue Cross Blue Shield
of Michigan

Boyne Highlands Resort

Top 100 Golf Resorts
Condé Nast Traveler Annual Readers' Survey
Favorite Downhill Terrain In Midwest
onthesnow.com Visitors' Choice Awards

"Our group has been meeting at Boyne Highlands for 40 years. We have children of the original participants now bringing their children. Many people who attend our meeting have been to conferences at the largest resorts in the country, yet still revel in the familiarity and friendliness of Boyne Highlands."

Michael Dick, M.D.
Tri-State Medical-Dental Conference



The Inn at Bay Harbor A Renaissance Golf Resort

Best of MidAmerica Award
Meetings Focus MidAmerica Magazine

The World's Best Hotels
Travel + Leisure magazine

"I don't even know where to begin. Our wedding was absolutely perfect in every way! Every single detail was amazing and everyone on staff at The Inn was wonderful to our family and friends! We even had guests who had just returned from Hawaii and they told us that they would rather travel to The Inn than visit Hawaii again! We truly had the time of our lives."

Alison Morency, Bride

BOYNE's northern Michigan Resorts...

- Flexible event space featuring state-of-the-art audio/visual technology
- Lakeside/outdoor reception and team building venues
- Lodging options from standard hotel rooms and spacious one-, two- and three-bedroom condominiums
- Fully customizable catering menus and variety of restaurants
- BoyneRewards loyalty program provides points which can be redeemed for resort amenities and retail purchases. Marriott Rewards offered at The Inn at Bay Harbor - A Renaissance Golf Resort. Visit boynerewards.com or marriottrewards.com for more information.
- Complimentary wireless Internet access
- Complimentary parking
- Complimentary access to on-site fitness centers
- Group discounts offered on resort activities
- Quaint waterfront towns of Harbor Springs, Petoskey and Boyne City offer shopping, festivals and activities
- Convenient day trip distance from Mackinac Island
- Convenient to Pellston Reginal Airport and Traverse City's Cherry Capital Airport; 5,000 foot paved/lighted jet strip with fuel at Boyne Mountain
- Active green practices and achievement of leader certification from Green Lodging Michigan

PURE MICHIGAN



BoyneRewards®

Visit www.BOYNE.com for additional information on conferences and weddings at Boyne Mountain Resort, Boyne Highlands Resort and The Inn at Bay Harbor - A Renaissance Golf Resort. View Group Value Dates and also submit Request for Proposal online.

Driving Distances:

Traverse City Airport	65 miles
Grand Rapids	175 miles
Lansing	200 miles
Detroit	260 miles
Chicago	350 miles

Three distinctive resorts...
always the perfect event

BOYNE
What are you up for?



Boyne Mountain Resort, Boyne Falls ~ Proudly celebrating nearly 65 years, the resort boasts a top four ranking among most popular Michigan destinations as named by AAA. With a Swiss-Austrian theme, its centerpiece is the Mountain Grand Lodge and Spa and connecting Avalanche Bay, Michigan's largest indoor waterpark. Accommodating events for up to 800, the resort's varied terrain provides four seasons of recreation and entertainment with two beautiful mountainside golf courses, mountain biking, sandy beach, Zipline Adventure, kayaking and canoeing on Deer Lake, scenic chairlift rides, tennis and snowsports. Solace Spa, named among "Best Spas in the World" by *Spa Magazine*, offers the latest rejuvenation and wellness practices, salon services, and fitness facilities.



Boyne Highlands Resort, Harbor Springs ~ Home to the Golf Channel's Big Break X: Michigan series. Its Scottish charm and elegance are captured in the rolling hills and four championship golf courses and combine as the ideal destination for meetings, retreats and weddings. Boyne Highlands earned recognition as "Best Golf Venue" from readers of *Michigan Meetings + Events* magazine and is able to accommodate groups of up to 600 with its facilities, including the Country Club of Boyne, offering flexible meeting options-many with views of the mountainside and golf courses. In addition to a variety of accommodations, the resort delights visitors with 72 spectacular holes of golf, savory cuisine, horseback trail rides, biking trails, tennis, scenic chairlift rides, Zipline Adventure, paddle boating and snowsports. A complimentary nine-hole, par 3 course at the base of the mountain is a perfect choice for a team event and guests return year after year to attend the Young Americans Dinner Theatre.

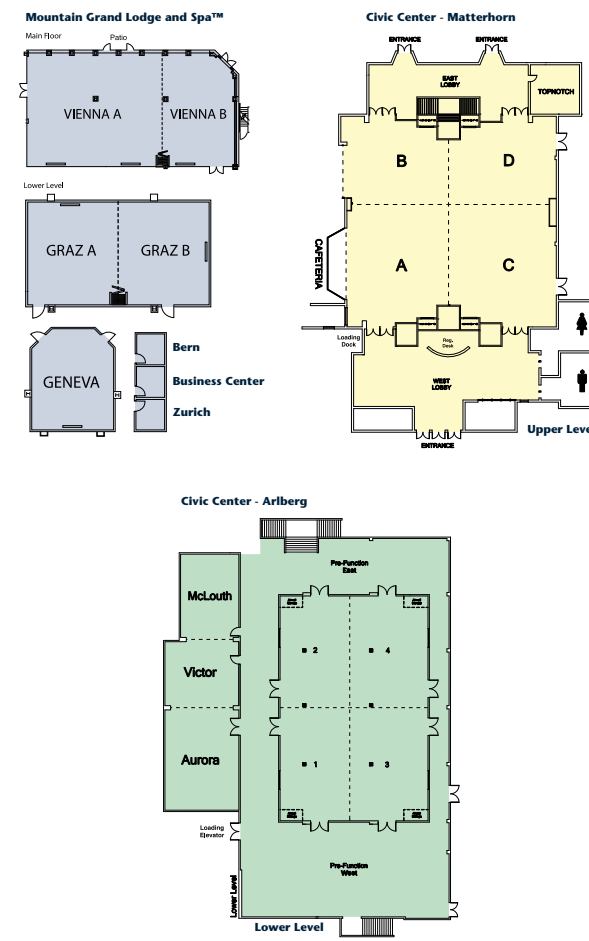
The Inn at Bay Harbor - A Renaissance Golf Resort, Bay Harbor ~ Rekindling the heritage and style of the great turn-of-the-century northern Michigan inns, The Inn at Bay Harbor is set along five miles of Lake Michigan shoreline. Named among *Travel + Leisure* magazine's "Best Hotels in the World" and honored among the "Top 100 Golf Resorts" by *Condé Nast Traveler*, The Inn affords guests the finest hotel accommodations and services with 45 breathtaking holes of championship golf, including Bay Harbor Golf Club, a full service spa and salon, an award-winning restaurant, and shopping in the Village of Bay Harbor. Accommodating groups of up to 200, the staff's attention to detail and culinary creativity transforms an ordinary event into a Uniquely Renaissance experience to be savored. The resort is consistently ranked in the top five customer satisfaction survey results for all Renaissance Hotels and Resorts and offers 150 guest rooms including one-, two- and three-bedroom suites.



www.BOYNE.com ■ 800.862.6963
BOYNE Group Sales ■ P.O. Box 19, Boyne Falls, Michigan 49713



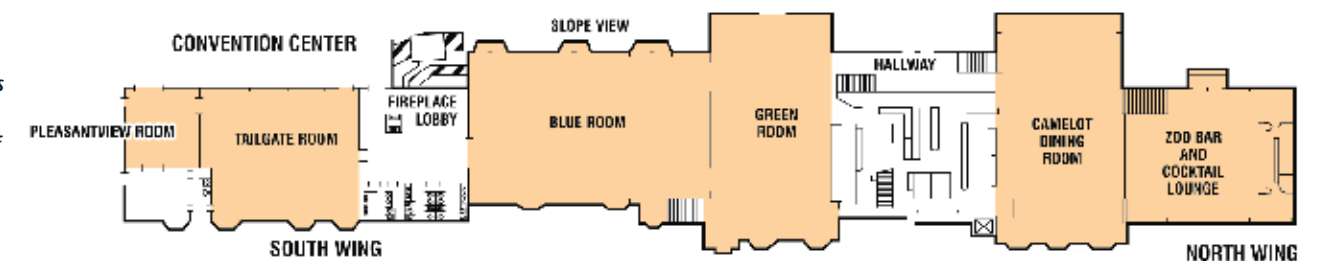
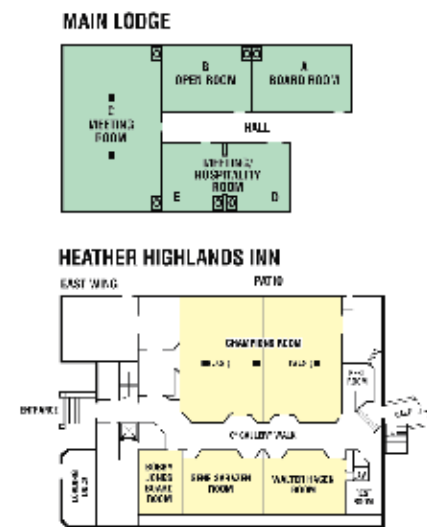
450 Guest Rooms and Suites
37,000 Sq. Ft. of Event Space



Location	Dimensions (Width x Length)	Ceiling Height	Square Footage	Capacity						
				Theater	Schoolroom	Conference	Reception	Banquet (Rounds of 10)		
Mountain Grand Lodge and Spa										
Vienna - Full	89'8" x 48'	10'	4,310	482	228	-	350	290		
Vienna A	59'9" x 48'	10'	2,875	329	156	-	230	210		
Vienna B	29'9" x 48'	10'	1,435	155	72	38	120	80		
Graz - Full	49'8" x 29'	8'10"	1,440	155	72	38	120	80		
Graz A	24'10" x 29'	8'10"	720	77	36	20	60	40		
Graz B	24'10" x 29'	8'10"	720	77	36	20	60	40		
Geneva	26' x 32'	9'1"	832	68	42	20	60	50		
Bern	9'5" x 10'	9'1"	95	-	-	-	-	4		
Zurich	9'5" x 10'	9'1"	95	-	-	-	-	4		
Civic Center - Matterhorn										
Matterhorn - Full	100' x 100'	18'	10,000	1,000	600	-	1,000	740		
Matterhorn - A & C	100' x 60'	18'	6,000	600	360	-	600	440		
Matterhorn - B & D	100' x 40'	18'	4,000	400	240	-	400	300		
Matterhorn - AB or CD	50' x 100'	18'	5,000	450	300	-	500	370		
A or C individual	50' x 60'	18'	3,000	300	180	56	300	220		
B or D individual	50' x 40'	18'	2,000	200	120	49	200	150		
West Lobby	81' x 26'	8'	2,106	-	-	-	-	-		
Registration Desk - West Lobby	30' x 10'6"	-	-	-	-	-	-	-		
East Lobby	58' x 12'	8'	696	-	-	-	40	-		
Top Notch	23' x 24'	8'	552	40	20	14	50	40		
Civic Center - Arlberg										
Arlberg - Full	52' x 80'9"	8'10"	4,199	440	250	80	300	250		
Arlberg 1 & 3	52' x 39'4"	8'10"	2,045	215	120	42	160	128		
Arlberg 2 & 4	52' x 41'5"	8'10"	2,154	225	125	42	160	128		
Arlberg 1 & 2 or 3 & 4	26' x 80'9"	8'10"	2,103	220	135	42	160	128		
1 or 3 individual	26' x 39'4"	8'10"	1,022	107	65	32	80	64		
2 or 4 individual	26' x 41'5"	8'10"	1,077	112	68	32	80	64		
West Prefunction	64' x 36'	8'10"	2,304	-	-	-	210	-		
East Prefunction	48' x 20'	8'10"	960	-	-	-	95	-		
Aurora	36' x 26'	8'10"	937	80	50	28	-	-		
Victor	23' x 26'	8'10"	598	40	20	14	-	-		
McLouth	30' x 20'	8'10"	600	36	24	24	-	-		
Clock Tower Lodge (Alpine Room)	30' x 39'	8'	1,170	65	40	18	95	70		



410 Guest Rooms and Suites
31,500 Sq. Ft. of Event Space

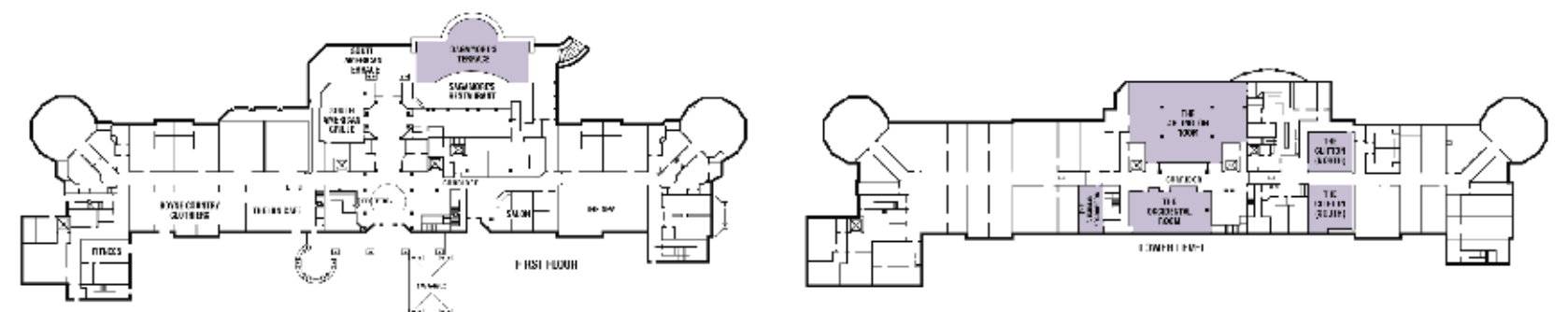


Function Space	Dimensions (Width x Length)	Ceiling Height	Square Footage	Capacity						
				Theater	Schoolroom	Conference	Reception	Banquet		
Main Lodge - Lower Level										
Room A	28.6' x 20.6'	8'	589	-	-	10	-	-		
Room B	28.6' x 19.6'	8'	560	32	20	16	30	35		
Room C	28.6' x 48'	8'	1,372	110	56	24	64	-		
Room D/E	19.6' x 42.6'	8'	834	50	32	16	45	-		
Dining Room	-	-	-	-	-	-	-	225		
Olympic Lounge	55' x 23'	20'	1,265	-	-	-	130	100		
Country Club of Boyne	-	-	-	-	-	-	-	200		
Convention Center										
Zoo Bar	53' x 41.6'	28'	2,204	100	48	42	250	144		
Camelot	48' x 88.6'	28'	4,252	220	75	-	300	240		
Green Room	49' x 89'	28'	4,361	200	120	-	300	200		
Blue Room	94.6' x 56'	28'	5,297	400	220	-	600	336		
Tailgate Room	56.1' x 54.7'	28'	3,068	200	120	-	250	160		
Pleasantview Room	33' x 29.3'	10'	966	60	32	20	-	-		
Heather Highlands Inn										
Champions Room	65' x 45.6'	8.5'	2,957	180	112	36	200	136		
East or West	32.6' x 45.6'	8.5'	1,486	90	50	24	100	64		
Walter Hagen Room	32' x 23.6'	8.5'	755	50	32	24	50	40		
Gallery	81.6' x 9.6'	8.5'	-	-	-	-	75	-		
Gene Sarazen Room	32' x 23.6'	8.5'	755	50	32	24	50	40		
Bobby Jones Room	14.6' x 19.6'	8.5'	286	-	-	10	-	-		

Four Seasons of Activities

Northern Michigan is a true four-season playground with a seemingly endless menu of outdoor pursuits. BOYNE is the perfect complement to the area's activity options, with meeting and lodging facilities conveniently situated among the choices as well as offering a range of active entertainment and team-building opportunities right at the resorts. All seasons, many reasons. *What are you up for?*

- Championship Golf on 11 Courses • Spas • Zipline Adventure • Avalanche Bay Indoor Waterpark • Skiing and Snowboarding
- Segway Tours • Dog Sledding • Swimming • Fitness Centers • Young Americans Dinner Theatre • Biking • Horseback Trail Riding
- Tennis • Dining and Wine Events • Scenic Chairlift Rides • Fishing • Boating • Nearby Casino, Boutiques and Galleries



150 Guest Rooms and Suites
6,600 Sq. Ft. of Event Space

Function Space	Dimensions (Width x Length)	Ceiling Height	Square Footage	Capacity				
				Theater	Schoolroom	Conference	Reception	Banquet
The Arlington	71' x 486'	10'4"	3,408	330	160	-	300	180
The Occidental	50' x 24'	9'6"	1,200	125	60	32	100	70
The Clifton	26' x 58'	8'8"	1,508	130	80	35	120	90
The Clifton North	26' x 23'	8'8"	598	50	30	14	45	30
The Clifton South	26' x 35'	8'8"	910	80	50	20	75	60
Cushman Boardroom	15' x 26'	9'6"	390	-	-	12	-	-
Sagamore's Terrace	-	-	-	-	-	-	82	50
Tower Suite*	19' x 20'	-	380	25	15	-	-	-
Penthouse*	20' x 25'	-	500	35	24	-	-	-
Bay Harbor Golf Club**	-	-	-	-	-	-	-	175
Arthur's 27	30' x 35'	-	-	-	-	-	-	110
Preserve	17' x 33'	-	-	-	-	-	-	36

* Not shown, located on guest room levels. **Bay Harbor Golf Club is located three miles from the resort. Seasonal availability.